

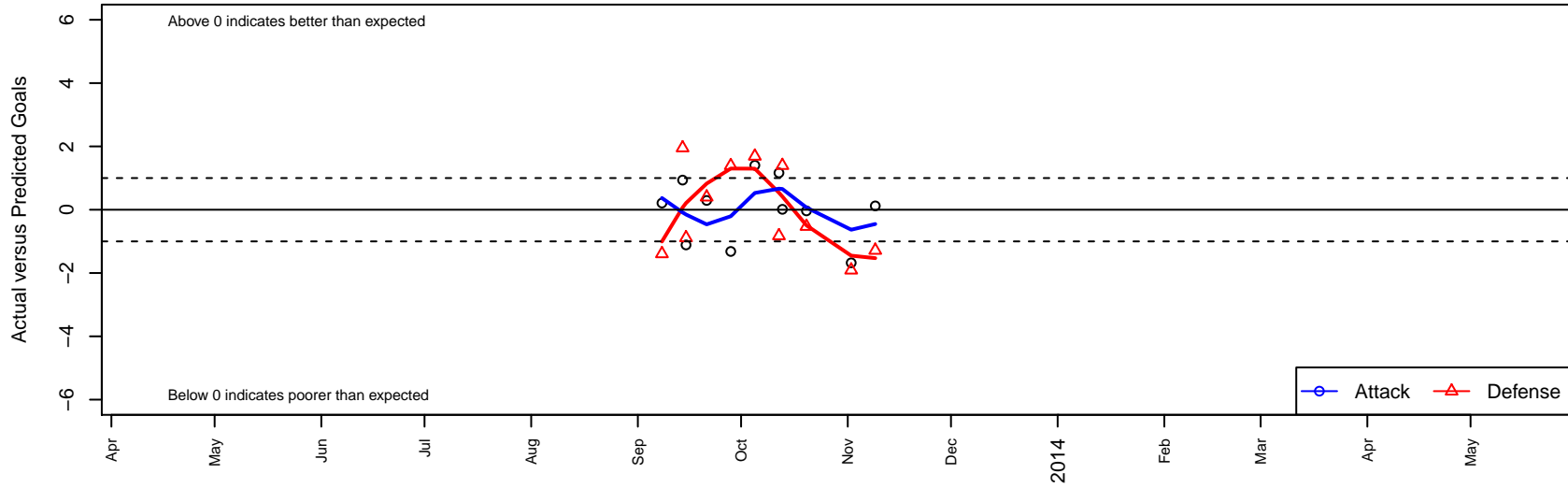
Empire SC B98

, CAS
 B98 total strength=1481
 attack=14.53 defense=7.72
 fall league = CSL Gold U15
 alt names used:
 EMPIRE SC B98

Venues played:
 CSL Gold U15



Empire SC B98
 Dots are actual minus expected GF (blue circles) and GA (red triangles).
 Blue line is smoothed change in attack strength. Red is smoothed change in defense strength.



	date	home		away		venue	pred.home	pred.away
17888	2013-11-09	Empire SC B98	1	North Valley FC Blue B98	4	CSL Gold U15	0.88	2.72
16985	2013-11-02	IE Surf Peters B98	3	Empire SC B98	0	CSL Gold U15	1.09	1.68
15411	2013-10-20	Empire SC B98	1	FC Long Beach B98	6	CSL Gold U15	1.04	5.47
14468	2013-10-13	UIFC San Lorenzo B98	2	Empire SC B98	1	CSL Gold U15	3.40	0.99
14110	2013-10-12	Empire SC B98	2	FC Golden State B99	5	CSL Gold U15	0.84	4.17
13098	2013-10-05	Empire SC B98	3	Royal Puma FC B98	2	CSL Gold U15	1.60	3.69
12131	2013-09-28	Olimpia SC B98	2	Empire SC B98	0	CSL Gold U15	3.39	1.32
11200	2013-09-21	Empire SC B98	1	Valley United Hernandez B98	2	CSL Gold U15	0.71	2.40
10530	2013-09-15	Empire SC B98	0	Cypress FC Black B98	3	CSL Gold U15	1.11	2.11
10223	2013-09-14	South Los Angeles United Academy B98	3	Empire SC B98	2	CSL Gold U15	4.95	1.06
9571	2013-09-08	Oxnard PAL B98	7	Empire SC B98	1	CSL Gold U15	5.61	0.79